

TEMPORARY MOUNTAIN BIKE TRAIL AND WALKING TRACK DIVERSIONS

Project: Snowmaking Infrastructure Upgrades, Bunny Walk to Milk Run

MOUNTAIN BIKE TRAILS

In order to continue mountain bike operations Kosciuszko Thredbo (KT) will put into place up to 8 temporary diversions when the development crosses each section of the Kosciuszko Flow Trail (Flow trail) and Cannonball Downhill trail.

- These diversions will be located on existing access roads or within the construction corridor where possible.
- If the above is not possible they will be located on pre disturbed open ski run. No temporary diversions are located within any Biodiversity Values mapped land. No native vegetation will be cleared for the diversions.
- All temporary diversions will be rehabilitated immediately after use in accordance with the *Rehabilitation Guidelines for the Resort Areas of Kosciuszko National Park* (NGH 2007).
- Some sections riders may be required to dismount and walk their bike. These areas will be sign posted or managed by KT personnel.
- These temporary diversions will be in place until the affected sections of trail have been reestablished, we expect each diversion to be in place for 1-4 days depending on the site.

The Flow trail and Cannonball Downhill trail (Cannonball DH trail) above Meadows Nature track crosses the development site at 4 locations. The Flow trail at this location cannot be diverted onto the existing Cannonball Downhill trail as this section of the trail is quite advanced and steep, and therefore not a suitable diversion for the intermediate Flow Trail.

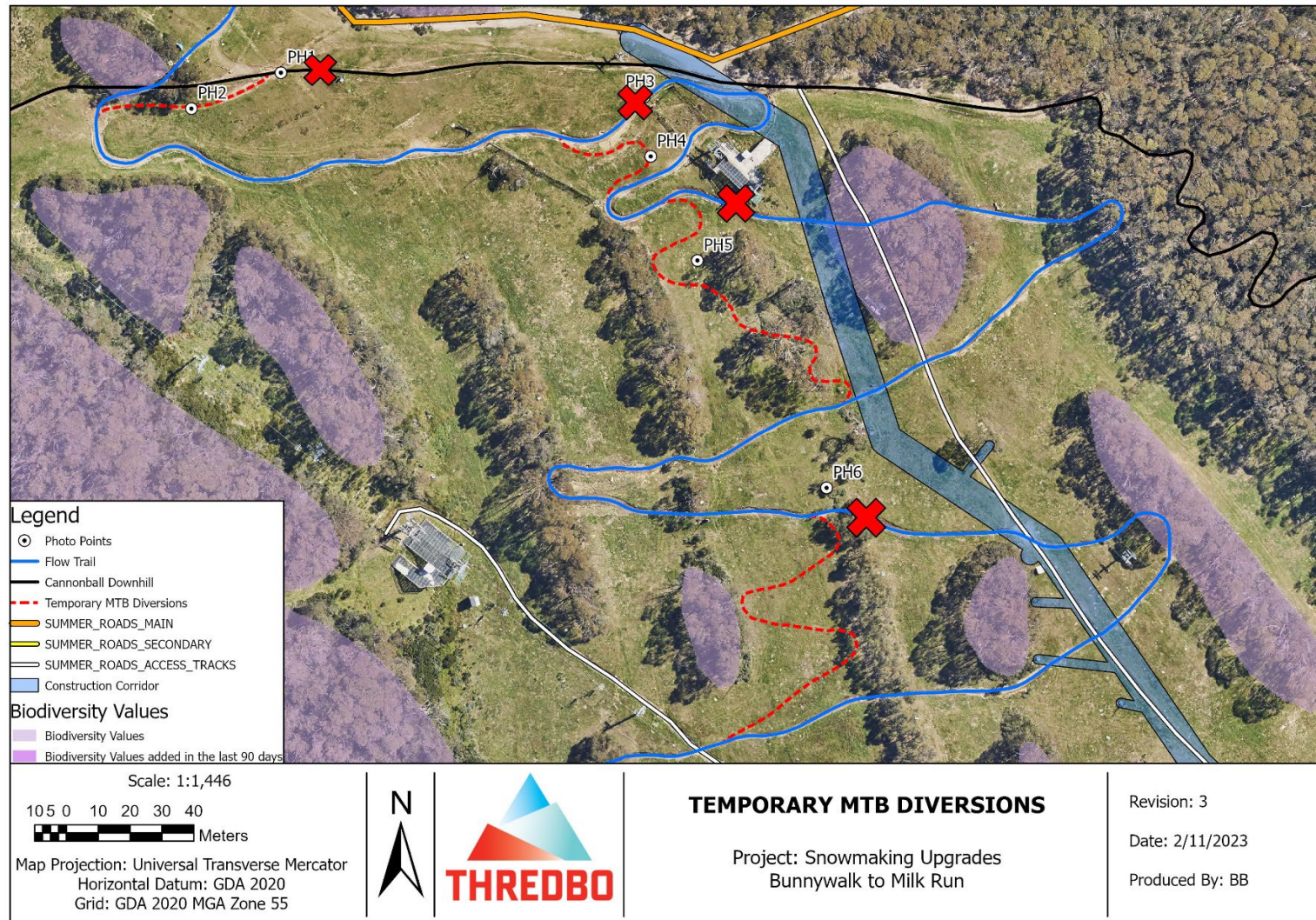
Below Meadows Nature Track the Flow and Cannonball DH trail cross the development site at 8 locations (4 crossings for each trail). When active construction works are being undertaken within the vicinity of these 8 crossings the trail will be diverted around the development site as per below.

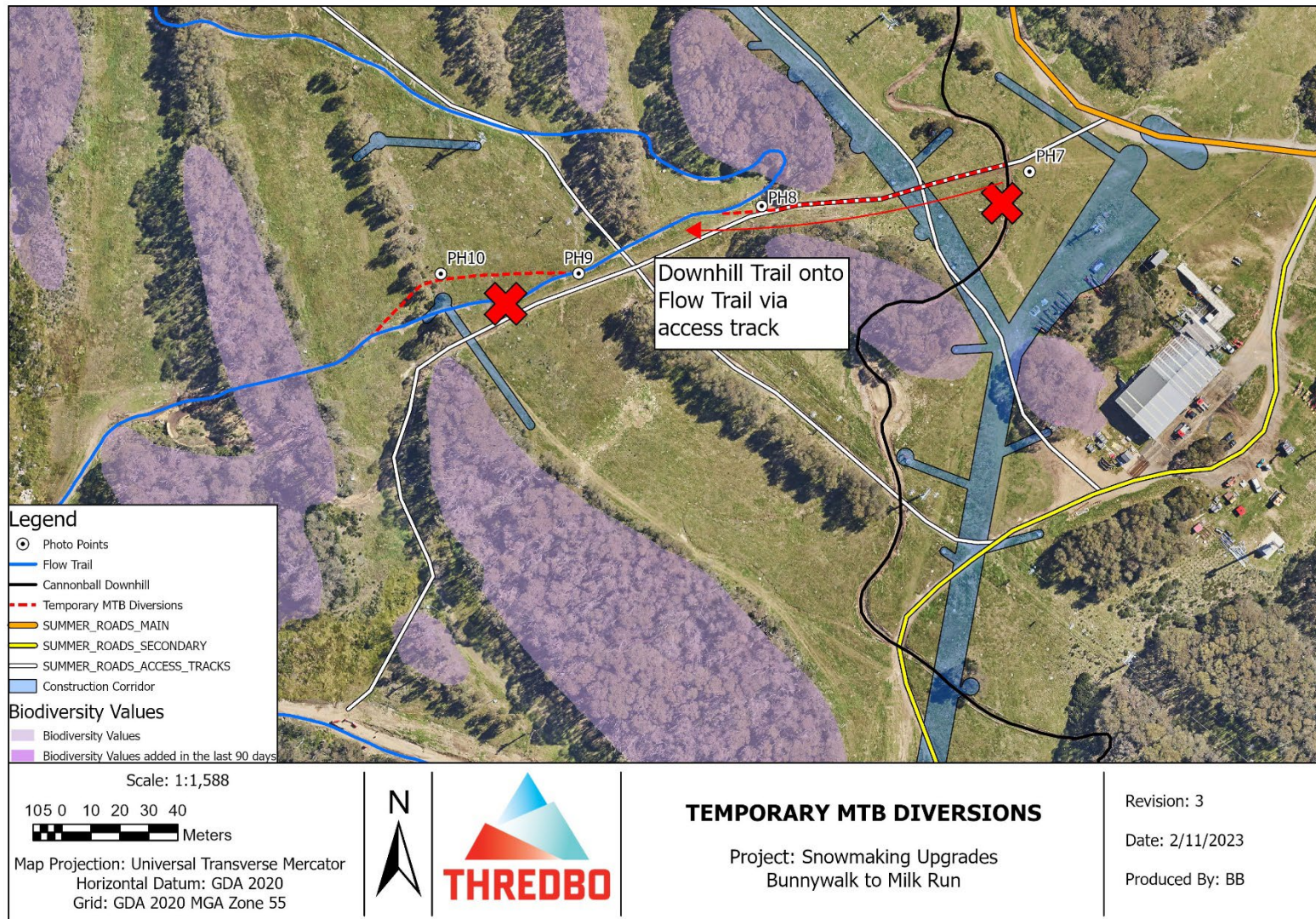
- At each of the four crossings the Flow trail will be diverted onto an existing access road and onto the lower section of the Cannonball DH trail, see figures below.
- This section of the Cannonball DH trail is intermediate as per IMBA standards and is suitable for a diversion of the Flow trail.
- At the four crossings of the Cannonball DH trail, the trail will be diverted onto the existing Meadows Nature Track and onto the Flow trail, see figures below.
- The above diversions will be in place until the affected sections of trail have been reestablished. KT expect each diversion to be in place for 1-4 days depending on the site.

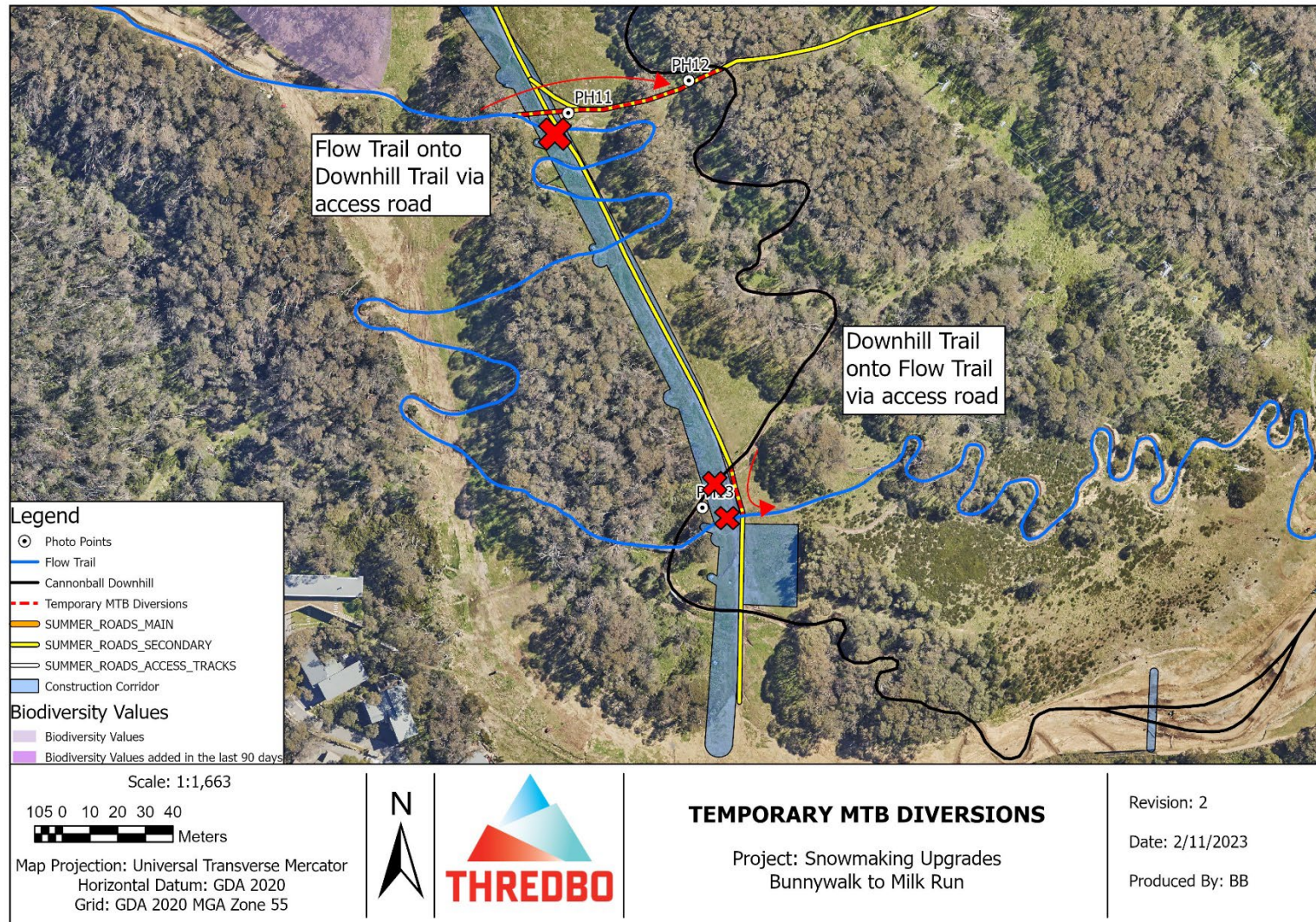
Walking Tracks

- The Meadows Nature Track will be temporarily diverted across pre-disturbed open ski run.
- If the Meadows Nature Track needs to be temporarily closed, this closure would likely be 1-2 days.









Temporary MTB Trail Diversions – Photo Points




Photo Point	Description	Coordinates	Photo
PH1	Looking cross slope from Downhill Trail to Flow Trail above fly-over	616,023 5,960,069	
PH2	Link onto Flow Trail below fly-over	615,995 5,960,059	
PH3	Looking downslope skiers right of Bunnywalk Station	616,138 5,960,063	




Photo Point	Description	Coordinates	Photo
PH4	Looking downslope skiers right of Bunnywalk Station	616,140 5,960,044	
PH5	Looking downslope belkew Bunnywalk Station	616,157 5,960,012	
PH6	Looking downslope Middle Slopes	616,195 5,959,940	




Photo Point	Description	Coordinates	Photo
PH7	Looking cross slope along access track above Cat Shed	616,417 5,959,788	
PH8	Looking cross slope from access track back onto Flow Trail	616,325 5,959,777	
PH9	Looking cross slope from Flow Trail	616,261 5,959,753	




Photo Point	Description	Coordinates	Photo
PH10	Looking cross slope through tree island back onto Flow Trail (Tree branch will be temporarily tied back during diversion use)	616,214 5,959,753	
PH11	Looking cross slope along access track to Downhill Trail	616,418 5,959,529	
PH12	Flow Trail linking onto Downhill Trail	616,462 5,959,541	

Photo Point	Description	Coordinates	Photo
PH13	Downhill Trail linking onto Flow Trail via summer road	616,467 5,959,387	